

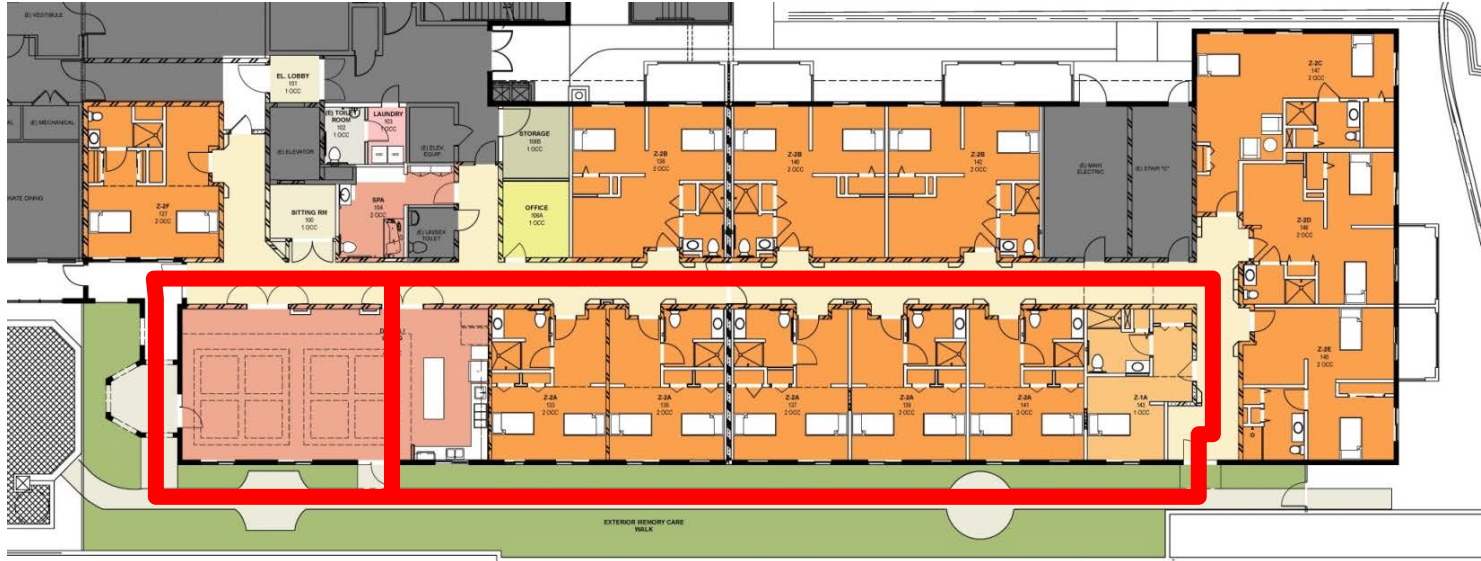
# Design Process – Applied Research

- New construction vs. renovation
- Critical analysis of the environment and identify opportunities
- Apply research to process - Direct cognition so that the environmental modification contributes to each resident's personal success
- Apply research to process - Donald Norman "natural mapping" – "the environment should contain knowledge necessary for its correct use, rather than relying on the knowledge held in the head of the user"
- Provide walking paths and access to outdoor areas
- Maintain the quality of life through design



# Design Example

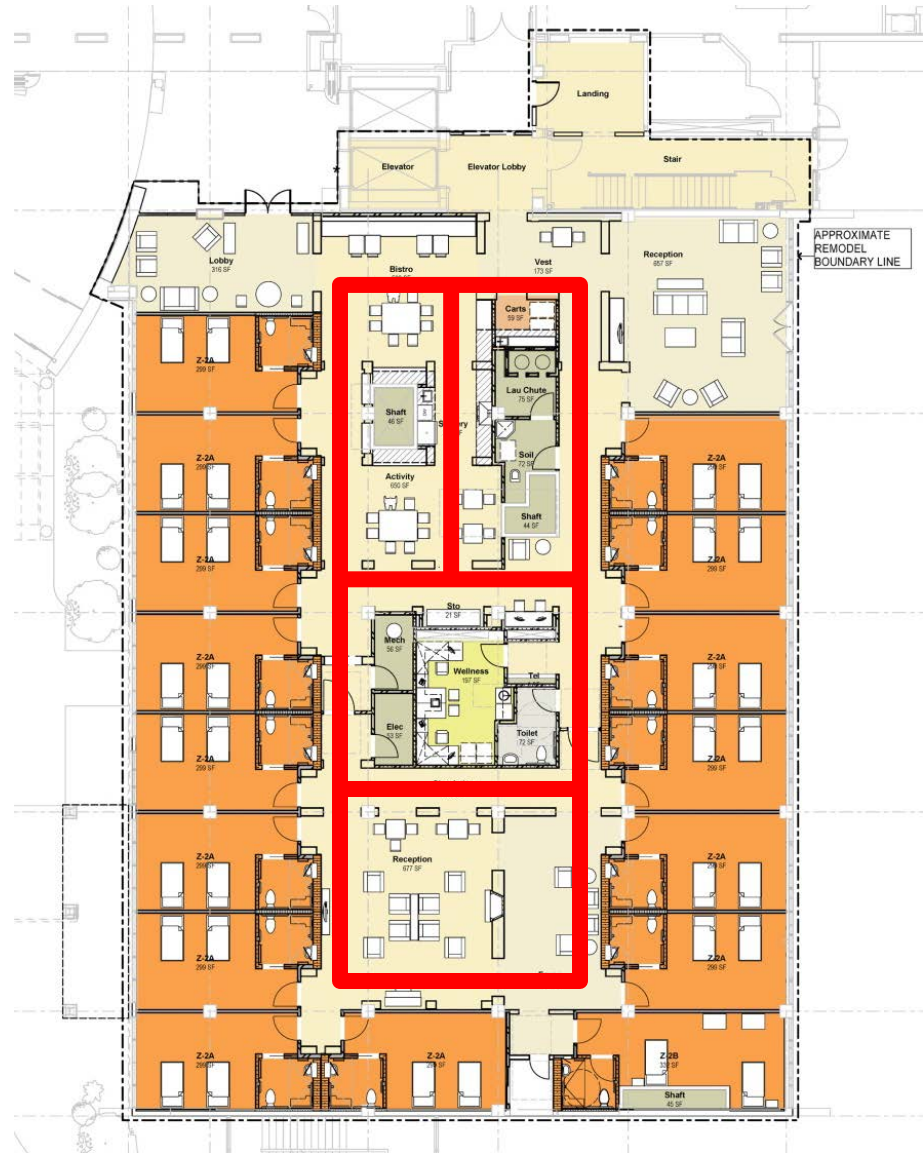
MBK, Grand Oaks | Thousand Oaks, CA | Memory Care Conversion





# Design Example

Silverado Senior Living, Beach Cities | Redondo Beach, CA | Memory Care Conversion



# Orientation and Wayfinding

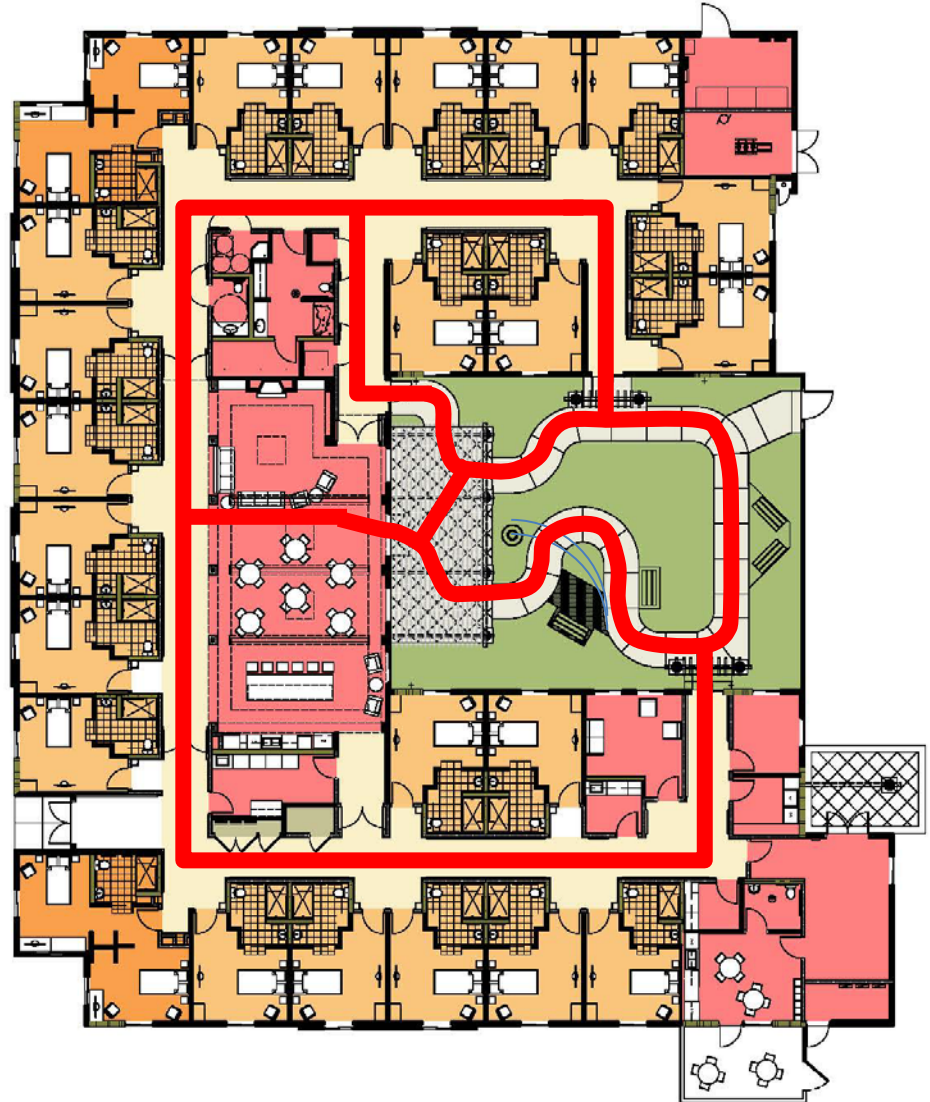
- Design for a logical circulation system that removes obstacles or anything competing with awareness and perception of the environment
- Provide a circular or looping circulation system
- Visible and obvious access
- Security and controlled access to undesirable spaces or exits
- Eliminate long, lengthy corridors and “dead ends”
- Break up long corridors with rest areas
- Simplify wayfinding system to: paths, edges, districts, nodes and landmarks





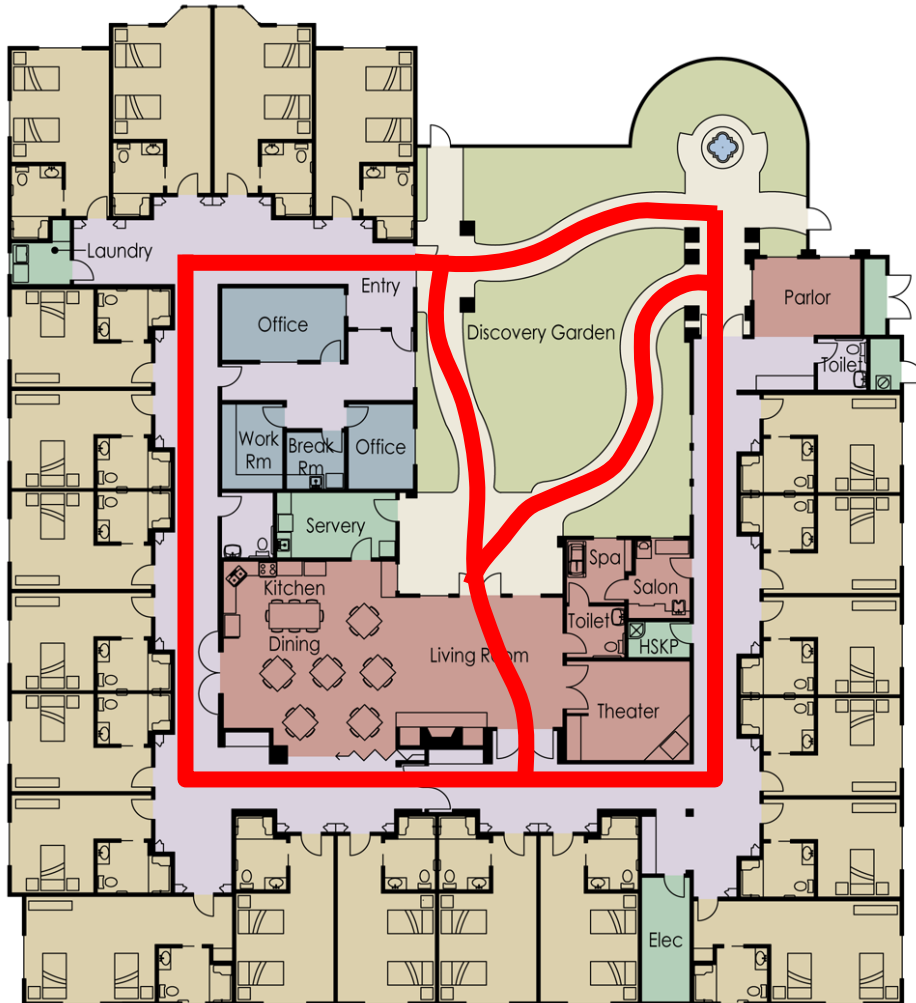
# Design Example

ABHOW, The Terraces at San Joaquin Gardens | Fresno, CA | New Construction – Memory Care



# Design Example

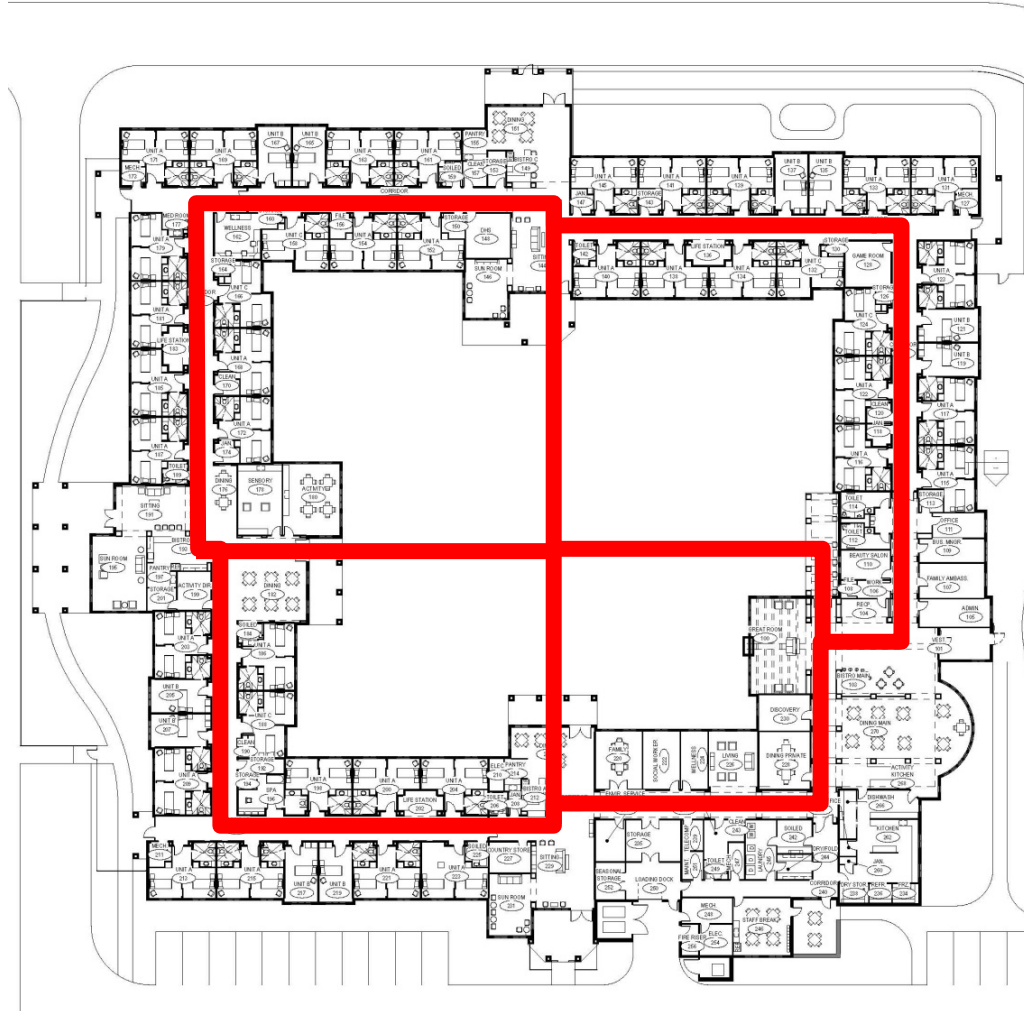
Vintage Senior Living | Placentia, CA | New Construction – Memory Care





# Design Example

Silverado Senior Living, Austin | New Construction – Memory Care



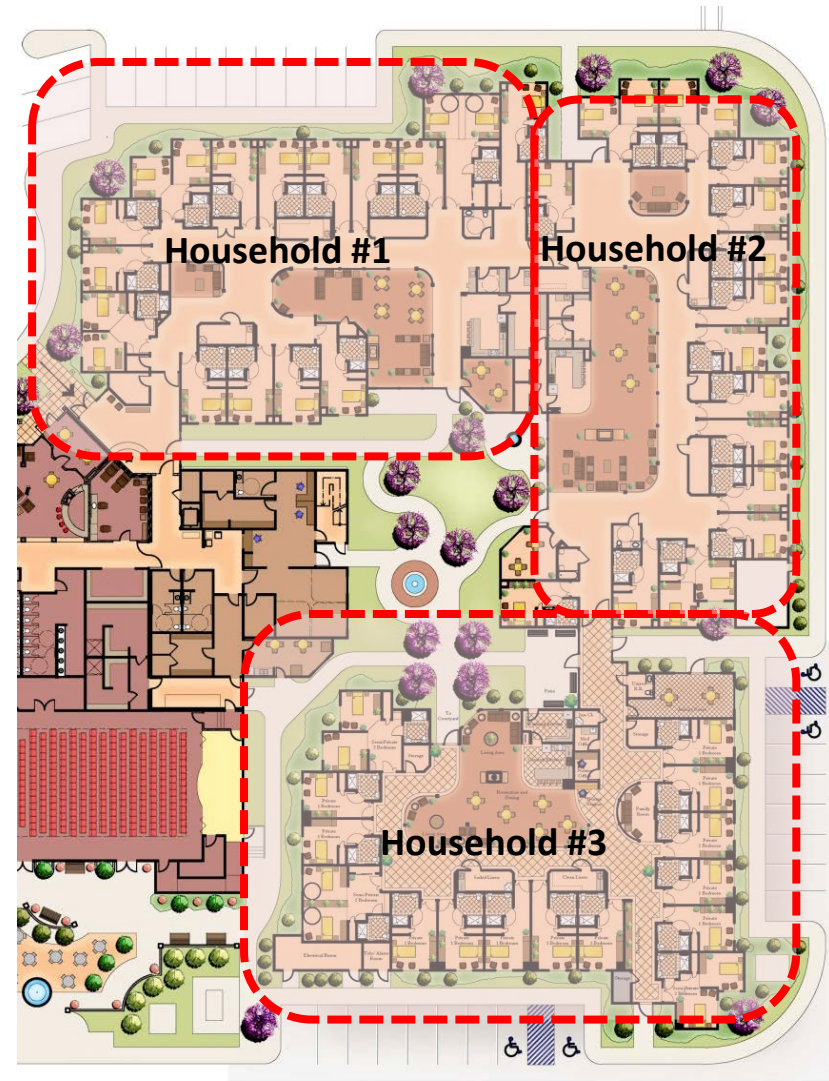
# Design Example - Household SNF

ABHOW, Terraces at San Joaquin Gardens Fresno, CA | New Construction

The Cottage Concept Applied to Healthcare



Household #3 Enlarged Plan





# Memory Care Environment

- Fortifies autonomy and well being
- Residential environment - familiar and homelike
- Promotes safety and reduces fear
- Limit range of options to create an environment that the resident can manage
- Constantly stimulate the patient's senses at the appropriate levels
- Promotes feelings of security, mastery and belonging to lessen resident's frustrations



# Therapeutic Environment

- Exercise and strengthen remaining skills
- Support functional ability through meaningful design imagery
- Activities can change negative emotions and quickly promote feelings of purpose and achievement
- Maximize awareness, orientation, autonomy and perceived control
- Provide opportunities for positive stimulation & change
- Create opportunities for socialization and spontaneity
- Ensures privacy and dignity





# Memory Boxes are a Prosthetic Wayfinding Device

- Contain significant memorabilia of a persons life, such as photographs or nostalgic artifacts
- Items remain recognizable late into the stages of Alzheimer's disease because they are overlearned
- Therapeutic component to the resident & will function in long term memory cuing
- Personalization & reinforcement of the person
- Visual and intellectual interest, a rich source of information and positive stimulation
- Important to create familiarity within the home environment and reinforce perceived control over the environment



# Meaningful Experiences





# Cottage vs. Facility Based

	Pros	Cons
Cottage	Small scale/human scale	Less efficient staffing
	Reduced environmental stress	Less efficient R/NR space ratio
	Reduced stimulation	Higher construction cost/bed
	Smaller group sizes	More lot space intensive
	More familiar and better addresses market expectations	
	Associated w/ higher competency	
Facility	Opportunity to create neighborhoods	Larger group sizes
	More efficient to operate – less expense	Environment more difficult to understand and negotiate
	Most efficient space planning & design	Likely increased levels of ambient environmental stress
	Most efficient R/NR space ratio	Likely increase in environmental obstacles
	Lower Cost per bed	

**Thank you!**